



HAL
open science

Coupling of an aeroacoustic model and a parabolic equation code for long range wind turbine noise propagation

Benjamin Cotté

► **To cite this version:**

Benjamin Cotté. Coupling of an aeroacoustic model and a parabolic equation code for long range wind turbine noise propagation. *Journal of Sound and Vibration*, 2018, 422, pp.343-357. 10.1016/j.jsv.2018.02.026 . hal-01774235

HAL Id: hal-01774235

<https://ensta-paris.hal.science/hal-01774235v1>

Submitted on 23 Apr 2018

HAL is a multi-disciplinary open access archive for the deposit and dissemination of scientific research documents, whether they are published or not. The documents may come from teaching and research institutions in France or abroad, or from public or private research centers.

L'archive ouverte pluridisciplinaire **HAL**, est destinée au dépôt et à la diffusion de documents scientifiques de niveau recherche, publiés ou non, émanant des établissements d'enseignement et de recherche français ou étrangers, des laboratoires publics ou privés.

Coupling of an aeroacoustic model and a parabolic equation code for long range wind turbine noise propagation

B. Cotté

*Institute of Mechanical Sciences and Industrial Applications (IMSIA), ENSTA ParisTech,
CNRS, CEA, EDF, Université Paris-Saclay
828 bd des Maréchaux, 91120 Palaiseau, France*

Abstract

This study proposes to couple a source model based on Amiet's theory and a parabolic equation code in order to model wind turbine noise emission and propagation in an inhomogeneous atmosphere. Two broadband noise generation mechanisms are considered, namely trailing edge noise and turbulent inflow noise. The effects of wind shear and atmospheric turbulence are taken into account using the Monin-Obukhov similarity theory. The coupling approach, based on the backpropagation method to preserve the directivity of the aeroacoustic sources, is validated by comparison with an analytical solution for the propagation over a finite impedance ground in a homogeneous atmosphere. The influence of refraction effects is then analyzed for different directions of propagation. The spectrum modification related to the ground effect and the presence of a shadow zone for upwind receivers are emphasized. The validity of the point source approximation that is often used in wind turbine noise propagation models is finally assessed. This approximation exaggerates the interference dips in the spectra, and is not able to correctly predict the amplitude modulation.

Keywords: Wind turbine noise, parabolic equation, atmospheric propagation, aeroacoustic sources, point source approximation

Email address: benjamin.cotte@ensta-paristech.fr (B. Cotté)

1. Introduction

Noise from wind turbines can be perceived at large distances, of the order of one kilometer or more, and is characterized by amplitude modulations that vary depending on the receiver position and atmospheric conditions [1, 2, 3]. In order to predict this noise, it is necessary to accurately model the aeroacoustic sources that are generally dominant for a modern wind turbine [1, 4, 5], as well as the propagation phenomena in the atmospheric boundary layer [6, 7]. This raises the problem of coupling source and propagation models, since wind turbine blades are moving and extended noise sources of complex directivity.

It is common in the literature to use the point source approximation in wind turbine noise propagation models. The noise is supposed to be produced by a monopole of specified power located at the rotor center. The wind turbine is thus represented as an omnidirectional point source that can easily be included in various propagation codes. This approach has been used for instance in the ray-tracing calculations of Ref. [8], and in the parabolic equation calculations of Refs. [9, 10]. Generally, the power spectrum of the source is obtained from sound pressure level measurements at a reference location in accordance with IEC 61400-11.

To justify this approach, many studies refer to the work of Makarewicz [11], who claims that the point source approximation is valid when the distance between the receiver and the wind turbine is at least twice the blade length. This conclusion is drawn from a fairly simple model, that assumes that the wind turbine blades can be reduced to a single point source at the tip of each blade, and that neglects the influence of the ground and of the inhomogeneity of the atmosphere. On the other hand, Heutschi *et al.* [3] have shown that wind turbines have to be viewed as extended sources to correctly account for the ground effect. This is clearly seen in their noise spectra, that present interference dips that are too strong when the point source approximation is used.

The effect of wind speed gradients in the atmospheric boundary layer is known to have an influence on both the noise sources and their long range

propagation. van den Berg [12] has shown that situations with a high wind shear at night are commonly encountered. In these situations, the difference of wind speeds between the bottom and top of the rotor can be significant. This means that the blade angles of attack will vary during one rotation, which
35 could lead to partial or complete detachment of the boundary layer, as shown in the measurements of Bertagnolio *et al.* [13]. This modification of the noise source mechanisms is one of the possible explanations of the strong amplitude modulation of wind turbine noise that can be measured in the far-field [2]. Wind speed gradients also influence acoustic propagation through refraction effects.
40 It is well known that refraction tends to cause a channelling of noise downwind, and creates a shadow zone upwind whose size depends on frequency, as shown for instance by Hubbard and Shepherd [6].

There is currently a strong interest in developing propagation models that consider extended noise sources in order to correctly predict amplitude modulation phenomena that are due to a combination of emission and propagation effects. Several studies propose approaches based on ray-tracing methods [14, 15, 16], while other consider parabolic equation methods [17, 18]. The objective of this study is to couple a source model based on Amiet's theory and a parabolic equation (PE) code in order to model the emission and propagation
45 of wind turbine noise in an inhomogeneous atmosphere and to assess the validity of the point source approximation. Compared to other studies, the originality of the coupling approach consists in using the backpropagation method to preserve the directivity of the aeroacoustic sources. Note that the word *coupling* is used throughout the article in the computer programming sense, meaning that there
50 is a strong interdependence between the source and propagation codes. It does not mean that there is a feedback from the propagation model on the source radiation.

Both trailing edge noise and turbulent inflow noise are included in the aeroacoustic source model. Although a frequency-domain model based on Amiet's
60 theory is considered in this article, based on our previous work [4], the method can be straightforwardly extended to any other frequency-domain source model,

such as the so-called BPM semi-empirical model that is widely used in wind turbine noise prediction studies [1, 19], or the combined aeroelastic-aeroacoustic model recently proposed by Bertagnolio *et al.* [5], that includes an improved
65 model for separation and stall noise compared to the original BPM model.

The organization of the paper is as follows. In Section 2, the source and propagation models are described, as well as the proposed coupling method. Then, the model, hereafter called Amiet-PE model, is validated in Section 3 by comparison with an analytical model for the propagation over a ground of finite
70 impedance. Finally, results are presented in Section 4 to show the influence of ground and meteorological effects in different directions of propagation, and test the validity of the point source approximation.

2. Description of the coupled model

2.1. Aeroacoustic source model based on Amiet's theory

We recently proposed in Ref. [4] a model of trailing edge noise and turbulent inflow noise for wind turbines based on Amiet's theory [20, 21, 22]. For an airfoil of chord c and span L that is fixed relative to a far-field receiver, and for aspect ratio L/c greater than about 3, the power spectral densities (PSD) of the acoustic pressure can be written in the general form:

$$S_{pp}^F(\mathbf{x}_R, \omega) = A(\mathbf{x}_R, \omega) \Pi(\mathbf{x}_R, \omega) |\mathcal{I}(\mathbf{x}_R, \omega)|^2, \quad (1)$$

75 with \mathbf{x}_R the position of the far-field receiver, A a coefficient that depends on the geometry and the angular frequency ω , Π a statistical function and \mathcal{I} an aeroacoustic transfer function. These functions depend on the noise generation mechanism considered and are detailed in Refs. [22, 4]. The superscript F in Equation (1) refers to the *fixed* airfoil.

80 The main input parameter of the model is the Π function. For turbulent inflow noise, corresponding to the interaction between the incident atmospheric turbulence and the leading edge of the blade, the function Π corresponds to the two-dimensional energy spectrum, that is modeled using a von Kármán spectrum for homogeneous and isotropic turbulence [4]. For trailing edge noise,

85 corresponding to the scattering of the turbulent boundary layer at the trailing edge, $\Pi(\omega) = \Phi_{pp}(\omega)l_y(\omega)$, with $\Phi_{pp}(\omega)$ the wall pressure fluctuation spectrum, estimated with the Rozenberg *et al.* [23] model, and $l_y(\omega)$ the transverse correlation length calculated by Corcos model.

The expression (1) is valid for an airfoil that is fixed with respect to the receiver. For a rotating blade at the angular position β , the PSD at a far-field receiver at angular frequency ω is written [24, 4] :

$$S_{pp}^R(\mathbf{x}_R^T, \omega, \beta) = \frac{\omega_e}{\omega} S_{pp}^F(\mathbf{x}_R^B, \omega_e, \beta), \quad (2)$$

with ω_e the emission angular frequency, \mathbf{x}_R^T the receiver coordinates in the wind turbine reference system, and \mathbf{x}_R^B the receiver coordinates in the blade reference system. The superscript R in Equation (2) refers to the *rotating* airfoil. The expression for the Doppler factor ω/ω_e is given in Sinayoko *et al.* [24], who also derived an expression for the azimuthally averaged spectrum:

$$S_{pp}^{av}(\mathbf{x}_R^T, \omega) = \frac{1}{2\pi} \int_0^{2\pi} \frac{\omega_e}{\omega} S_{pp}^R(\mathbf{x}_R^T, \omega, \beta) d\beta = \frac{1}{2\pi} \int_0^{2\pi} \left(\frac{\omega_e}{\omega}\right)^2 S_{pp}^F(\mathbf{x}_R^B, \omega_e, \beta) d\beta. \quad (3)$$

To take into account the fact that the incident flow is not uniform along a
 90 wind turbine blade, a strip theory is used, that consists in cutting each blade into
 M segments of variable chord c_m and span L_m , so as to respect the condition
 $L_m/c_m \geq 3$, $m = 1..M$, for which Equation (1) is valid. The different segments
 are supposed to be uncorrelated. A summation of the contributions for all blade
 segments are finally performed at the receiver. Note that all the expressions
 95 presented in this section are valid in free field in a homogeneous medium at
 rest.

2.2. Coupling of Amiet's source model with an analytical propagation model for the ground effect

The propagation of a point source over a finite impedance ground in a homogeneous atmosphere at rest is considered in this Section; see Figure 1(a). Assuming an $e^{-i\omega t}$ dependence, the sound pressure relative to the free field is

classically written as [7]:

$$\Delta L = \text{SPL} - \text{SPL}_{FF} = 10 \log_{10} \left| 1 + Q \frac{R_1}{R_2} e^{ik_0(R_2 - R_1)} \right|^2, \quad (4)$$

with SPL the sound pressure level, SPL_{FF} the free-field sound pressure level, Q the spherical wave reflection coefficient, $k_0 = \omega/c_0$ the acoustic wave number, c_0 the sound speed, and R_1 and R_2 the source receiver and image-source receiver distances. The spherical wave reflection coefficient is a function of the ground impedance and can be calculated analytically (see e.g. Refs. [7, 25, 26]). Using Equations (2) and (4), the sound pressure level for a rotating blade at the angular position β above a finite impedance ground can be calculated as:

$$\begin{aligned} \text{SPL}^R(\mathbf{x}_R^T, \omega, \beta) &= \text{SPL}_{FF}^R(\mathbf{x}_R^T, \omega, \beta) + \Delta L = 10 \log_{10} \left(\frac{S_{pp}^R(\mathbf{x}_R^T, \omega, \beta)}{p_{\text{ref}}^2} \right) + \Delta L \\ &= 10 \log_{10} \left(\frac{S_{pp}^R(\mathbf{x}_R^T, \omega, \beta)}{p_{\text{ref}}^2} \left| 1 + Q \frac{R_1}{R_2} e^{ik_0(R_2 - R_1)} \right|^2 \right), \end{aligned} \quad (5)$$

with $p_{\text{ref}} = 20 \mu\text{Pa}$ the reference pressure.

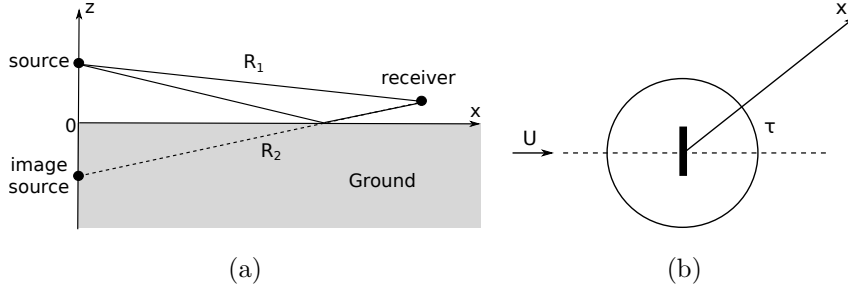


Figure 1: Notations for (a) the point source propagation over an infinite ground in a homogeneous atmosphere at rest, and (b) the wind turbine propagation in a direction τ with respect to the direction of the wind U .

100 2.3. Amiet-PE coupled model

Since the analytical model presented previously is only valid in a homogeneous atmosphere at rest, a propagation model based on the parabolic approximation is now presented to account for temperature and wind speed gradients in the atmosphere. The parabolic equation methods used are first presented

105 in Section 2.3.1, and the coupling method with the aeroacoustic source model introduced in Section 2.1 is then detailed in Section 2.3.2.

2.3.1. Acoustic propagation model based on the parabolic approximation

There are different methods to obtain a wide-angle parabolic equation, in order to efficiently calculate the acoustic propagation in an inhomogeneous stratified atmosphere at rest [27, 28, 29, 7]. Two methods are compared in this study, namely a wide-angle parabolic equation based on a Padé (1,1) approximation of the propagation operator and solved with the Crank-Nicholson method [27, 7], and a parabolic equation with fractional steps, called Split-Step Padé, based on higher order Padé approximants and solved with the method of Collins [29]. It may be noted that other parabolic equations exist for inhomogeneous moving atmospheres (see e.g. Refs [30, 31]). In this study, the effective sound speed approximation is used, which allows one to take into account the refraction effects due to the vertical wind gradients in the equation for a medium at rest [7]:

$$c_{\text{eff}}(z) = c(z) + U(z) \cos \tau = \sqrt{\gamma r T(z)} + U(z) \cos \tau, \quad (6)$$

with γ the specific-heat ratio, r the specific gas constant, $U(z)$ and $T(z)$ the mean vertical profiles of wind speed and temperature, and τ the angle between
110 the wind direction and the propagation direction noted as x , as shown in Figure 1(b).

Using the axisymmetric approximation, the three-dimensional Helmholtz equation can be reduced to the following two-dimensional equation in the far-field [27, 7]:

$$\left[\frac{\partial^2}{\partial x^2} + \left(\frac{\partial}{\partial z^2} + k^2 \right) \right] q_c = 0, \quad (7)$$

where $q_c = p_c \sqrt{x}$ connects the q_c variable to the complex pressure p_c , and k is the acoustic wave number. This wave number can be written as $k^2 = k_0^2 n^2 = k_0^2 (1 + \epsilon)$, where $n(z) = c_0 / c_{\text{eff}}(z)$ is the index of refraction and k_0 is a reference value of the wave number. Introducing the propagation operator

$$\mathcal{Q} = \left(1 + \epsilon + \frac{1}{k_0^2} \frac{\partial}{\partial z^2} \right)^{1/2} = (1 + \mathcal{L})^{1/2}, \quad (8)$$

we can decouple this equation into two equations characterizing a wave propagating in the positive x direction, denoted as q_+ (propagating wave), and a wave propagating in the negative x direction denoted as q_- (backpropagating wave). Using the notation $\gamma = \pm 1$, one obtains from Equations (7) and (8):

$$\left(\frac{\partial}{\partial x} - i\gamma\mathcal{Q}\right)q_\gamma = 0. \quad (9)$$

Introducing the variable ϕ_γ corresponding to the envelope of the pressure:

$$q_\gamma(x, z) = \phi_\gamma(x, z) \exp(i\gamma k_0 x), \quad (10)$$

and substituting Equation (10) into Equation (9), one gets:

$$\frac{\partial\phi_\gamma}{\partial x} = i\gamma(\mathcal{Q} - 1)\phi. \quad (11)$$

The wide-angle parabolic equation (WAPE) is obtained by using a Padé (1,1) approximant of the operator \mathcal{Q} :

$$\left(1 + \frac{1}{4}\mathcal{L}\right)\frac{\partial\phi_\gamma}{\partial x} = \frac{1}{2}i\gamma k_0\mathcal{L}\phi_\gamma. \quad (12)$$

This expression is valid up to an elevation angle of $30 - 40^\circ$ [32, 7]. It can be solved by finite differences with the Crank-Nicolson method [27, 31, 7], discretizing the domain using a rectangular mesh of size Δx and Δz along x and
115 z respectively.

To increase the angular validity of the parabolic equation, it is possible to use the Split-Step Padé (N,N) method proposed by Collins [29], noted in the following as SSP (N,N). For $\gamma = +1$, the advancement scheme between the field at x and at $x + \Delta x$ can be cast in the form [29, 33]:

$$\phi_{1,n} = \frac{1 + \mu_n\mathcal{L}}{1 + \nu_n\mathcal{L}}\phi_{1,n-1}, \quad n = 1..N, \quad (13)$$

with $\phi_{1,0}(x, z) = \phi_1(x, z)$ and $\phi_{1,N}(x, z) = \phi_1(x + \Delta x, z)$. The advancement scheme for the wave propagating along $-x$ (where $\gamma = -1$) is obtained directly by inverting the coefficients μ_n and ν_n in Equation (13). The angular validity increases with the order N of the development and depends on the mesh size
120 Δx chosen [33]. In the following, an order N = 2 is considered. As will be seen

in the following, this method also makes it possible to use larger mesh sizes Δx , thus reducing the computation time.

Along the vertical direction, the domain is bounded by a ground impedance condition at $z = 0$, and by an absorbing layer at the top of the domain to obtain
 125 non-reflecting boundary conditions [31, 7].

2.3.2. Coupling of Amiet's source model with the PE code

As explained in Section 2.1, each wind turbine blade is cut into M segments. For each segment m , each angular position β of the blade and each frequency ω , a parabolic equation calculation is performed for which an initial condition at $x =$
 130 0 is needed. For this purpose, analytical solutions, typically of Gaussian type, are commonly used to represent the radiation of a monopole [27, 7]. In order to preserve the directivity of the sources, the proposed coupling method uses initial numerical solutions based on the backpropagation method [34, 32, 35]. The principle, illustrated in Figure 2(a), consists first in back-propagating a
 135 known pressure field at $x = x_{is}$ to $x = 0$, taking $\gamma = -1$ in the Equations of Section 2.3.1. Then, in a second step, the starter at $x = 0$ is forward-propagated to the desired distance using the ‘‘classical’’ parabolic equation with $\gamma = +1$.

In the backpropagation method, the initial solution at $x = x_{is}$ is obtained for heights $z_{is,p} = p\Delta z, p = 0..P$, from the expression (2) for the SPL of a rotating blade. The initial solution thus includes the source directivity as viewed by this vertical line of receivers in this specific direction. In the absence of ground, it is written:

$$q_c(z_{is,p}) = \sqrt{S_{pp}^R(\mathbf{x}_{\mathbf{R}}^T, \omega, \beta)} \sqrt{x_S} e^{ik_0 R_{1,p}}, \quad (14)$$

with $R_{1,p} = \sqrt{x_{is}^2 + (y_S - y_{is})^2 + (z_S - z_{is,p})^2} = \sqrt{r_{is}^2 + (z_S - z_{is,p})^2}$ the distance between the segment at $(x_S = 0, y_S, z_S)$ and the p^{th} initial starter point. Note that an extra term $e^{ik_0 R_{1,p}}$ has been added to account for the geometrical phase shift due to differences in distance between the segment and the p^{th} initial starter point. In the presence of ground, the initial solution becomes:

$$q_c(z_{is,p}) = \sqrt{S_{pp}^R(\mathbf{x}_{\mathbf{R}}^T, \omega, \beta)} \sqrt{x_S} e^{ik_0 R_{1,p}} \left(1 + Q \frac{R_{1,p}}{R_{2,p}} e^{ik_0 (R_{2,p} - R_{1,p})} \right), \quad (15)$$

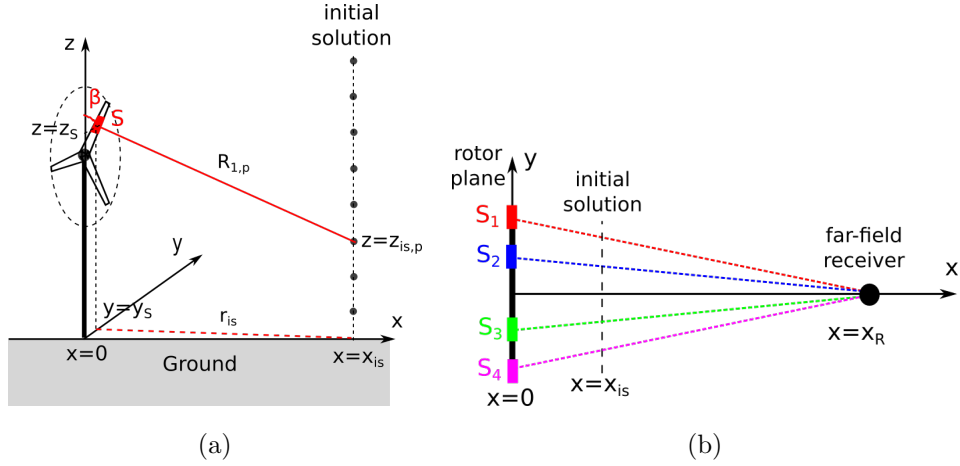


Figure 2: Schematics for (a) the backpropagation method used to obtain the starter at $x = 0$ from the initial solution at $x = x_{is}$ for one blade segment S , and (b) the different propagation planes between 4 blade segments noted S_1 , S_2 , S_3 and S_4 and the far-field receiver at $x = x_R$ (top view). Color online.

with $R_{2,p} = \sqrt{r_{is}^2 + (z_S + z_{is,p})^2}$ the distance between the image segment at $(x_S = 0, y_S, -z_S)$ and the p^{th} initial starter point .

140 During the backpropagation phase, the atmosphere is supposed homogeneous so that the analytical propagation solution can be used, and the ground is taken as rigid ($Q = 1$) because numerical instabilities may appear when backpropagating a field with an impedance ground [35]. Then, the starter at $x = 0$ can be propagated using any ground impedance and any sound speed profile.

145 Note also that each calculation is performed in a slightly different plane that crosses the far-field receiver at $x = x_R$, as shown in Figure 2(b). This method is therefore strictly exact only at this distance. For $x \neq x_R$, the SPL is obtained by summing contributions with different y values. Since the radius of the rotor (typically 50 m) is generally small compared to the propagation distances considered, the method will be seen to remain valid over a wide range of distances

150 in Section 3.

2.4. Point source approximation and effect of atmospheric absorption

When the point source approximation is used, the wind turbine is represented as an omnidirectional point source of sound power level $\text{SWL}(\omega)$ located at the tower height H . This sound power level can be obtained from the sound pressure level in free field $\text{SPL}_{FF}(\omega)$ in the direction τ using the azimuthally averaged spectrum of Equation (3):

$$\begin{aligned}\text{SWL}(\omega) &= \text{SPL}_{FF}(\omega) + 10 \log_{10}(4\pi R_1^2) \\ &= 10 \log_{10} \left(\frac{S_{pp}^{av}(\mathbf{x}_{\mathbf{R}}^{\mathbf{T}}, \omega)}{p_{\text{ref}}^2} \right) + 10 \log_{10}(4\pi R_1^2),\end{aligned}\quad (16)$$

where S_{pp}^{av} is obtained by summation over the segments of the three blades. Then, the sound pressure level is calculated using [7]:

$$\text{SPL}(\omega) = \text{SWL}(\omega) - 10 \log_{10}(4\pi R_1^2) + \Delta L(\omega) - \alpha(\omega)R_1, \quad (17)$$

where the relative sound pressure level ΔL can be calculated using any propagation model, and the term $-\alpha(\omega)R_1$ corresponds to the atmospheric absorption, with $\alpha(\omega)$ the absorption coefficient in dB/m. This approximate way of including absorption effect is valid when the direct and reflected paths are approximately equal [7], i.e. $R_2 \approx R_1$ in Figure 1(a). In the Amiet-PE coupled model, the effect of atmospheric absorption is also included in this approximate manner, by subtracting a factor $\alpha(f)R_1$ to the sound pressure level at the far-field receiver. This approximation is justified when the distance of propagation is large with respect to the rotor diameter.

It is also possible to calculate the variation of SPL with the position of the blade β during one rotation in the point source approximation. First, the “instantaneous” SWL is obtained from Equation (2):

$$\begin{aligned}\text{SWL}(\omega, \beta) &= \text{SPL}_{FF}(\omega, \beta) + 10 \log_{10}(4\pi R_1^2) \\ &= 10 \log_{10} \left(\frac{S_{pp}^R(\mathbf{x}_{\mathbf{R}}^{\mathbf{T}}, \omega, \beta)}{p_{\text{ref}}^2} \right) + 10 \log_{10}(4\pi R_1^2),\end{aligned}\quad (18)$$

where S_{pp}^R is obtained by summation over the segments of the three blades.

Then, the “instantaneous” SPL is calculated as in Equation (17):

$$\text{SPL}(\omega, \beta) = \text{SWL}(\omega, \beta) - 10 \log_{10}(4\pi R_1^2) + \Delta L(\omega) - \alpha(\omega)R_1. \quad (19)$$

This expression will be used to calculate the amplitude modulation of wind turbine noise in the point source approximation in Section 4.3. Note that in Equation (19) the relative sound pressure level ΔL is calculated for a point source located at the tower height and is the same for all values of the angle β .
165

3. Validation of the coupled model

3.1. Configuration studied

In this study, the same 2.3 MW wind turbine as in Ref. [4] is considered, with a diameter of 93 m, a mast height of 80 m and three blades of length 45 m. As justified in Ref. [4], each blade is decomposed into 8 segments to respect the constraints mentioned in Section 2. The rotation of the blade is divided into 30 angular positions (resolution of 12°).
170

The wind velocity at $z = 80$ m is assumed to be 8 m/s, and the angular velocity of the rotor is 13 rpm. In this section, the following conditions are considered for validation purposes:
175

- source modeling : only trailing edge noise is included, and the wind speed profile is assumed to be constant (no shear effects) ;
- propagation modeling : the conditions are assumed to be homogeneous ($c(z) = c_0$), with a finite impedance ground.

The absence of refraction effects makes it possible to compare the results of the coupled model with the analytical solution in a homogeneous atmosphere presented in Section 2.2.
180

The ground impedance is calculated with a two-parameter variable porosity model, which is physically admissible and yields a better agreement with measurements than commonly used one-parameter models (e.g. Delany-Bazley or Miki), as shown by Dragna *et al.* [26]. The effective resistivity is $\sigma_e = 50 \text{ kNs/m}^4$
185

and the rate of change of the porosity is $\alpha_e = 100 \text{ m}^{-1}$. As shown in Ref. [26] based on the impedance measurements of [36], these are typical values for a natural soil. All the calculations are performed with this impedance ground, except in Section 3.2 where a perfectly rigid ground is also tested.

In order to calculate the third octave band SPL at the center frequency f_c from a set of narrowband calculations, the following expression is used:

$$\text{SPL}_{1/3}(f_c) = 10 \log_{10} \left[\frac{(\Delta f)_{1/3}}{N_f} \sum_{n=1}^{N_f} 10^{\text{SPL}(f_n)/10} \right], \quad (20)$$

with $(\Delta f)_{1/3} = (2^{1/6} - 2^{-1/6})f_c$ the width of the third octave band centered at f_c . The number of narrowband calculations per third octave band are given in Table 1 for center frequencies between 100 Hz and 2000 Hz. More calculations per third octave band are performed when the frequency increases, as classically done in the literature [37].

Table 1: Number of narrowband frequencies N_f per third octave band for a center frequency f_c between 100 Hz and 2000 Hz.

f_c (Hz)	100	125	160	200	250	315	400
N_f	1	1	1	2	2	3	4
f_c (Hz)	500	630	800	1000	1250	1600	2000
N_f	4	4	5	5	5	6	6

Given the relatively high computation time of the coupled model, a simplified configuration denoted 1 and a complete configuration denoted 2 are considered ; see Table 2. In configuration 1, the domain is smaller and the spectrum is calculated on the third octave bands 100 Hz to 500 Hz only (i.e. $N_f = 18$ narrowband calculations). The initial starter is computed at a distance $x_{is} = 100 \text{ m}$, greater than 30 acoustic wavelengths λ over the whole spectrum.

3.2. Validation with a single blade segment

A series of calculations are made here with configuration 1, considering only the last segment of the 3 blades. Both rigid and impedance grounds are considered, and the effect of atmospheric absorption is neglected. The mesh size

Table 2: Calculation parameters in configurations 1 and 2. x_R is the position of the receiver and N_f the number of calculated frequencies.

	configuration 1	configuration 2
x_R	500 m	1000 m
domain size	600 m \times 200 m	1200 m \times 300 m
N_f	18	49
third octave bands	100 Hz to 500 Hz	100 Hz to 2000 Hz

along x is chosen equal to $\lambda/10$ in the WAPE method, and it varies between $\lambda/10$ and 5λ in the SSP (2,2) method. The mesh size along z remains equal to $\lambda/10$ in both methods.

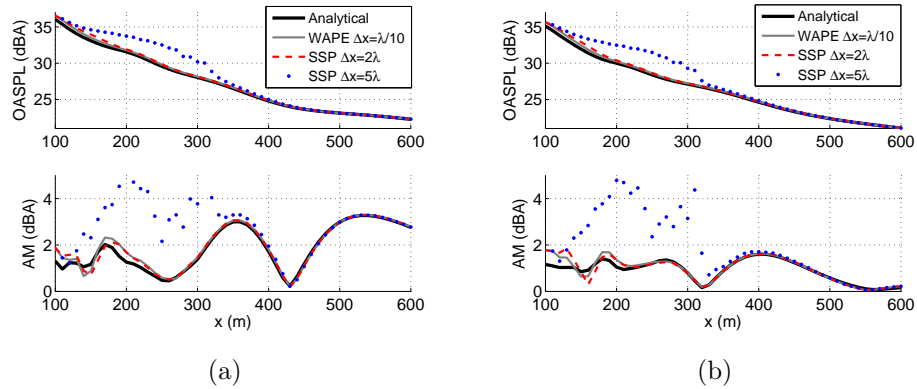


Figure 3: OASPL (top) and AM (bottom) as a function of x at $z_R = 2$ m with $\tau = 0^\circ$ and (a) a rigid ground or (b) an impedance ground for the analytical calculation (thick solid line), and for the coupled Amiet-PE calculations with the WAPE method and $\Delta x = \lambda/10$ (gray solid line), or with the SSP (2,2) method and $\Delta x = 2\lambda$ (dashed line) or $\Delta x = 5\lambda$ (dots). Color online.

Two important quantities to compare are the overall sound pressure level (OASPL) in dB(A), obtained by averaging over a rotation of the wind turbine, and the amplitude modulation (AM), corresponding to the difference between the maximum and the minimum of the OASPL over β . The evolution of these two quantities as a function of x is plotted in Figure 3 for a receiver at a height of 2 m downwind ($\tau = 0^\circ$). The results are plotted only for $x \geq x_{is} = 100$ m. With

215 the WAPE method and a mesh size $\Delta x = \lambda/10$, a very good agreement between
the Amiet-PE and the analytical solution is obtained, especially between 300 m
and 600 m where the curves superimpose perfectly.

Almost identical results are obtained with the SSP (2,2) method with mesh
sizes between $\lambda/10$ and 2λ ; only the result with 2λ is plotted in Figure 3. With
220 $\Delta x = 5\lambda$, on the other hand, significant differences are visible for distances
below 350 m. This is related to the reduced angular validity of the method
with this time step, as can be seen in the plots of the OASPL and AM with
respect to height (not shown here). These conclusions are valid for both rigid
and impedance grounds. In the following, the calculations will be performed
225 with the SSP (2,2) method and a mesh size $\Delta x = 2\lambda$. The gain in computation
time is about a factor 6 compared to the WAPE method with $\Delta x = \lambda/10$.

The directivities of Figure 4 calculated in configuration 1 at a distance of
500 m from the wind turbine at a height of 2 m show that the OASPL and the
AM are also well predicted in the other propagation directions, with a maximum
230 difference of 0.4 dB(A), both for rigid and impedance grounds. As commonly
observed in the near field [1, 4], the modulation amplitude is minimal downwind
and upwind, where the OASPL is highest, and maximal close to the crosswind
direction, where the OASPL is much lower. The higher AM obtained with a
rigid ground can be attributed to the stronger interferences between direct and
235 reflected waves that occur with this type of ground.

3.3. Validation for the entire wind turbine

The calculations presented in this section considers all the blade segments in
configuration 2, and includes the effect of atmospheric absorption, as described
in Section 2.4. Due to the large number of frequencies ($N_f = 49$) and the greater
240 domain size compared to configuration 1, a configuration 2 computation takes
approximately 4h30' to run for each segment and each direction τ on one core
of a PC equipped with an Intel Xeon X5650 processor at 2.66 GHz. In order to
reduce the computation time, it is possible to consider only the segments which
are located towards the end of the blade, the segments close to the rotor having

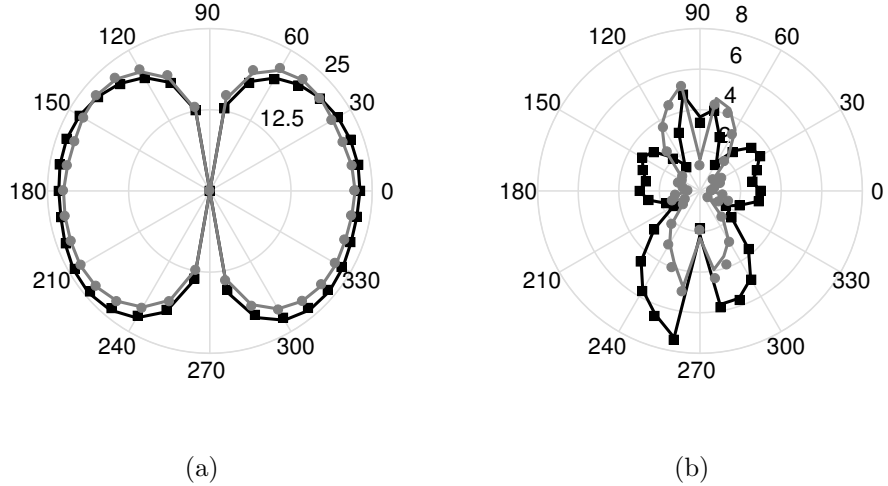


Figure 4: Horizontal directivity of (a) OASPL, and (b) AM for $x_R = 500$ m and $z_R = 2$ m for the analytical solution (symbols) and Amiet-PE calculations (lines) with a rigid ground (in black) and an impedance ground (in gray). The wind is coming from the left.

245 a low contribution to the total noise [38, 1]. The third-octave band spectra of
 Figure 5 show that by considering only the segments 3 to 8, the error is very
 small at $\tau = 0^\circ$, and remains reasonable for most frequencies at $\tau = 90^\circ$. The
 OASPL varies by less than 0.1 dB(A) at $\tau = 0^\circ$, and by less than 0.3 dB(A) at
 $\tau = 90^\circ$ when removing the first 2 segments. In the following, the calculations
 250 will be performed only with segments 3 to 8.

The evolution of the OASPL and of the AM as a function of distance is
 plotted in Figure 6 for a downwind receiver ($\tau = 0^\circ$) and a crosswind receiver
 ($\tau = 90^\circ$). The OASPL predictions are in very good agreement with the ana-
 lytical solution for all distances, i.e. even at large distances from the receiv-
 ing point at 1000 m where all the planes shown in Figure 2(b) cross. The differences
 255 between AM analytical and numerical solutions are more visible, especially for
 $x < 300$ m. As seen previously, the AM is relatively high in the crosswind
 direction, and remains smaller than 0.5 dB(A) in the downwind direction.

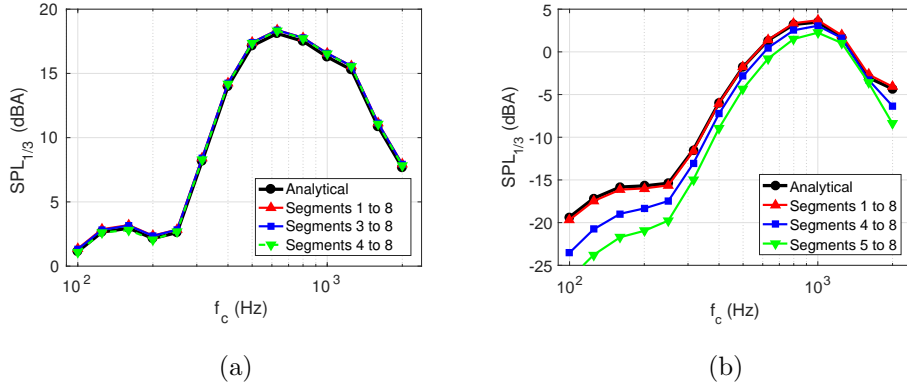


Figure 5: Third octave band spectrum of the sound pressure level at $x_R = 1000$ m and $z_R = 2$ m with (a) $\tau = 0^\circ$ and (b) $\tau = 90^\circ$ for the analytical and Amiet-PE calculations considering segments 1 to 8, 3 to 8 and 4 to 8. Color online.

4. Results in an inhomogeneous atmosphere

260 4.1. Configuration studied

In this section, the influence of the vertical wind speed and temperature gradients on wind turbine noise propagation is studied. Also, the influence of atmospheric turbulence is taken into account in the source model through the turbulent inflow noise mechanism, but its effect on sound propagation is neglected. As will be discussed in Section 4.4, the scattering effect of turbulence can be important when an acoustic shadow zone is present. The atmospheric absorption effect is included by the method described in Section 2.4.

The wind turbine and the calculation parameters are the same as in the configuration 2 described in Section 3.1. The Monin-Obukhov similarity theory is used to obtain the wind speed and temperature profiles $U(z)$ and $T(z)$, respectively, as well as the turbulence parameters, i.e. turbulence intensity and integral length scale, that are input parameters to the turbulent inflow noise model [4]. The input parameters of the model are the friction velocity u_* , the sensible heat flux H and the Monin-Obukhov L_* scale, which are given in Table 3 for neutral ($H = 0$), stable ($H = -25 \text{ W/m}^2$) and unstable ($H = 200 \text{ W/m}^2$) atmospheres. These parameters are chosen so as to obtain a wind speed of 8 m/s

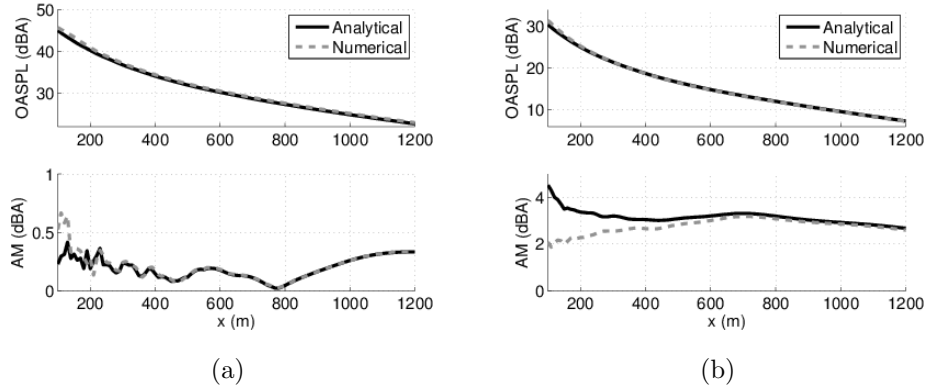


Figure 6: OASPL (top) and AM (bottom) as a function of x at $z_R = 2$ m with (a) $\tau = 0^\circ$ and (b) $\tau = 90^\circ$ for the analytical calculation (solid line), and for the coupled Amiet-PE calculations with segments 3 to 8 (dashed line).

at 80 m height. The interested reader will find more information on the Monin-Obukhov similarity theory and on this choice of parameters in Reference [4] and in references cited therein.

Table 3: Parameters of Monin-Obukhov similarity theory for neutral ($H = 0$), stable ($H = -25 \text{ W/m}^2$) and unstable ($H = 200 \text{ W/m}^2$) atmospheres.

Atmosphere	H (W/m^2)	u_* (m/s)	L_* (m)
Neutral (N)	0	0.49	Inf
Stable (S)	-25	0.38	200
Unstable (U)	200	0.58	-92

280 The vertical profiles of wind speed and temperature, as well as the profiles of effective sound speed for different propagation directions τ are plotted in Figure 7 for the three atmospheric conditions. It appears that the wind speed gradient between the bottom and the top of the rotor (between 35 m and 125 m approximately) is more important under stable conditions, typically occurring
285 at night. Thermal gradients are strongest in the unstable atmosphere.

For these three atmospheric conditions, the third octave band spectra of sound power level can be calculated using Equation (16). The SWL depends on

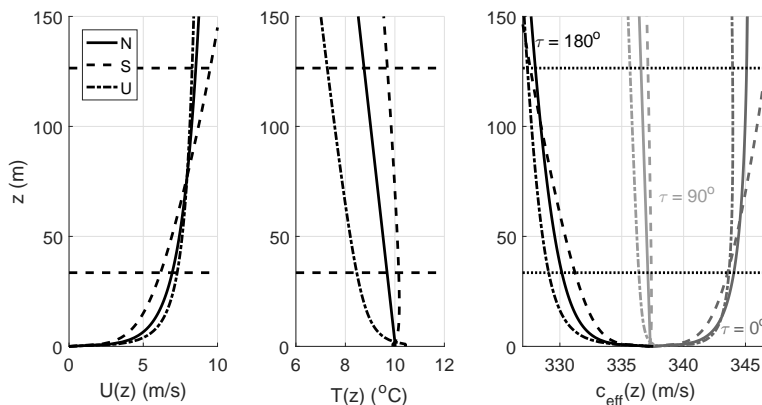


Figure 7: Vertical profiles of wind speed (left), temperature (middle), and effective sound speed for different directions τ (right) for a neutral atmosphere (solid lines), a stable atmosphere (dashed lines) and an unstable atmosphere (dashed-dotted lines). The minimum and maximum heights of the rotor are represented by horizontal dashed lines. Color online.

the direction of propagation considered, as shown in Figure 8 for $\tau = 0^\circ$ and $\tau = 90^\circ$. The total SWL is much higher downwind than crosswind, and the spectral shape is also different. In both cases, turbulent inflow noise is the dominant noise mechanism at low frequencies (less than 300-400 Hz) while trailing edge noise is dominant at higher frequencies. As was analyzed in Reference [4], the atmospheric conditions have a significant influence on turbulent inflow noise but they weakly modify the trailing edge noise spectrum. For this specific set of parameters, the SPL is higher in the unstable atmosphere compared to the stable and neutral atmospheres. However this result cannot be generalized because a weakly stable atmosphere has been considered here ($H = -25 \text{ W/m}^2$). It has not been possible to consider more stable atmospheres (i.e. with $L_* < 200 \text{ m}$) since the Monin-Obukhov similarity theory is limited to very low heights in that case [4].

4.2. Noise calculations for neutral, stable and unstable atmospheres

The maps of the OASPL are plotted in dB(A) for a neutral atmosphere and for three directions of propagation in Figure 9(a-c). It is clear that the levels

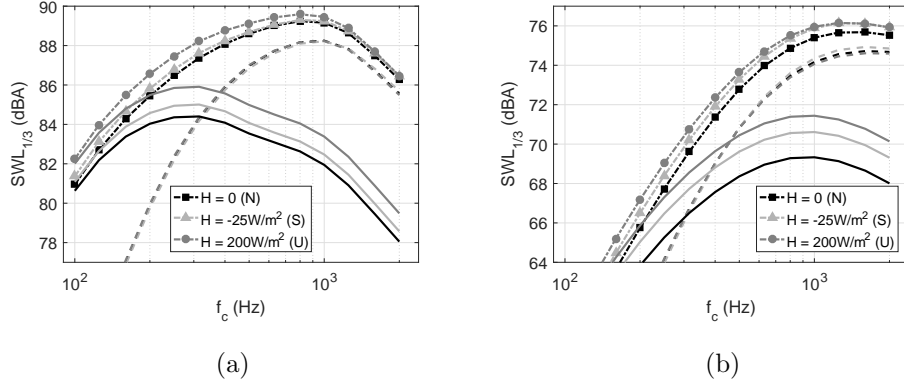


Figure 8: Third-octave band spectra of the sound power level in dB(A) at (a) $\tau = 0^\circ$ and (b) $\tau = 90^\circ$ for the three atmospheric conditions. The dashed lines correspond to trailing edge noise predictions, the solid lines to turbulent inflow noise predictions, and the dash-dotted lines with symbols to the total predictions. Color online.

crosswind ($\tau = 90^\circ$) are very low, due to the low SWL of the source in this
 305 direction. The levels downwind ($\tau = 0^\circ$) and upwind ($\tau = 180^\circ$) are similar
 up to about 500 m. Beyond 500 m, an acoustic shadow zone appears when the
 sound propagates upwind.

Figure 10 compares third-octave band spectra in different directions for a
 neutral atmosphere, at a distance of 500 m and 1000 m. At 500 m, one notices the
 310 modification of the ground effect due to atmospheric refraction. The interference
 dip is shifted to higher frequencies as τ increases, which explains the difference
 between downwind and upwind levels. At 1000 m, the effect of the shadow
 zone is clearly felt for $\tau = 135^\circ$ and 180° , with much lower levels than in the
 downwind direction, especially at high frequencies.

The OASPL is plotted as a function of the distance x in Figure 11(a) for the
 315 three atmospheric conditions and for downwind ($\tau = 0^\circ$), crosswind ($\tau = 90^\circ$)
 and upwind ($\tau = 180^\circ$) receivers. The levels are higher in the upwind direction
 between 300 m and 600 m approximately, which can be attributed to the ground
 effect described above. Beyond 800 m, on the other hand, the highest levels are
 320 observed downwind because upwind receivers are in the acoustic shadow zone.

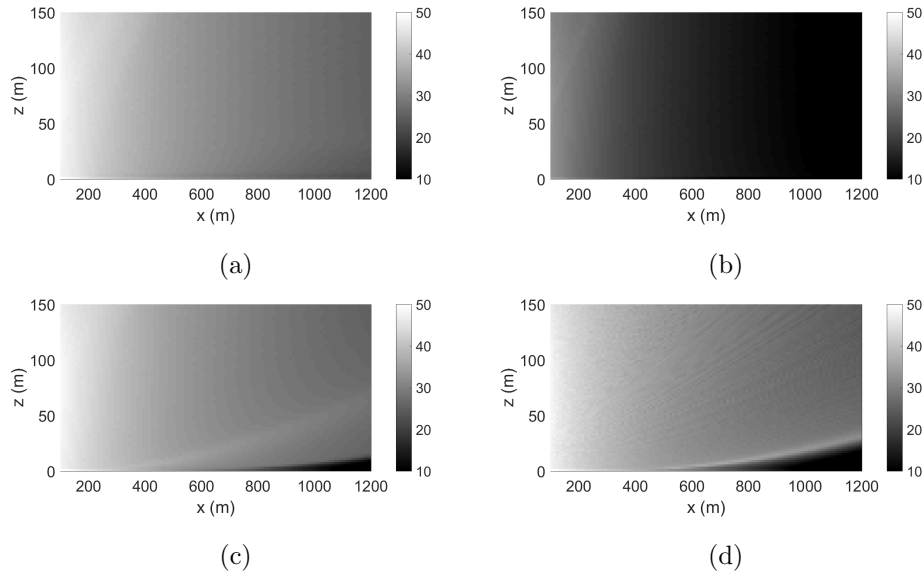


Figure 9: Maps of the OASPL in dB(A) for a neutral atmosphere ($H = 0$) with the Amiet-PE model at (a) $\tau = 0^\circ$, (b) $\tau = 90^\circ$, (c) $\tau = 180^\circ$, and (d) with the point source approximation at $\tau = 180^\circ$. Color online.

The difference between the levels in stable, unstable and neutral conditions is relatively low. The most significant difference is seen in the crosswind direction beyond 500 m, where the level variations in the unstable atmosphere are different from the two other atmospheres due to the negative temperature gradients (see
 325 Figure 7).

The same type of plot is shown in Figure 11(b) for the amplitude modulation. The AM is very small downwind, and remains between 2 and 4 dB(A) crosswind. For upwind receivers, the AM fluctuates in a complex way between
 330 1 and almost 6 dB(A) depending on distance and atmospheric conditions. To better understand these variations, it is interesting to look at the third octave band spectra of SPL and AM plotted in Figure 12 at $x_R = 500$ m and 1000 m upwind ($\tau = 180^\circ$). Because of diffraction effects, the shadow zone starts at shorter ranges at high frequencies. That is why for the receiver at 500 m, only the highest frequencies are attenuated, while a large range of frequencies are
 335 attenuated for the receiver at 1000 m. The largest AM occurs when the receiver

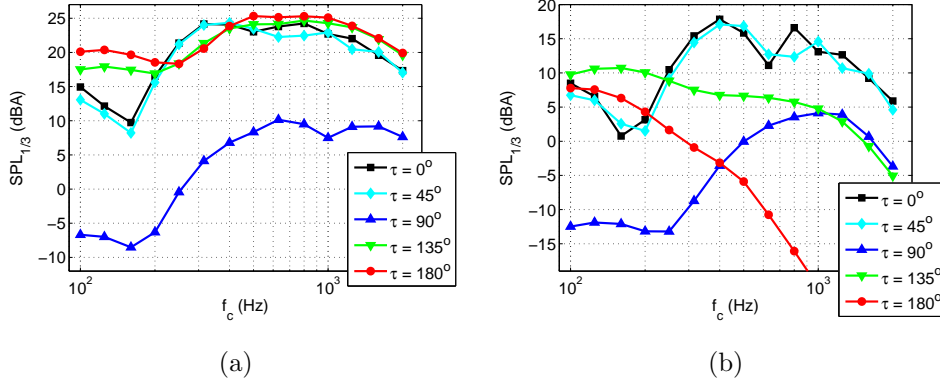


Figure 10: Third-octave band spectra of the sound pressure level in dB(A) at (a) $x_R = 500$ m and (b) $x_R = 1000$ m at a height of 2 m for a neutral atmosphere ($H = 0$). Color online.

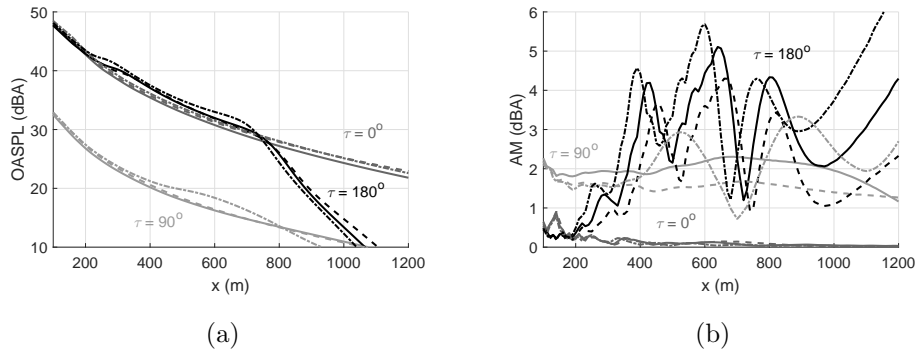


Figure 11: (a) OASPL and (b) AM in dB(A) as a function of x at $z_R = 2$ m for a neutral atmosphere (solid lines), a stable atmosphere (dashed lines) and an unstable atmosphere (dash-dotted lines). Color online.

is close to the limit of the shadow zone at a given frequency, because it will enter and leave the illuminated region during the blade rotation. This explains why the highest AM are found at high frequencies at 500 m, and at mid-frequencies at 1000 m.

340 Figures 12(a) and (b) also show an interesting difference between the three atmospheric conditions in the upwind direction. Compared to the neutral and stable atmospheres, the SPL in the unstable atmosphere is 2 dB higher at low frequencies at a distance of 500 m, and about 6 dB below over a large frequency

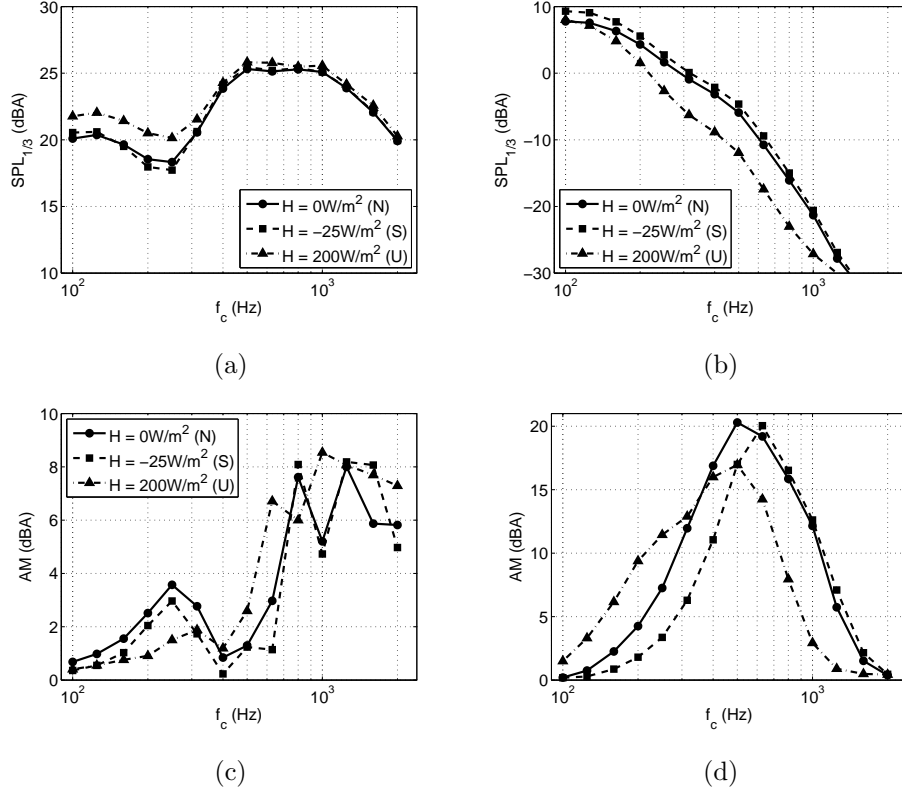


Figure 12: Third-octave band spectra of (a) the SPL at $x_R = 500$ m, (b) the SPL at $x_R = 1000$ m, (c) the AM at $x_R = 500$ m, and (d) the AM at $x_R = 1000$ m, at a height of 2 m upwind ($\tau = 180^\circ$) for the three atmospheric conditions.

range at a distance of 1000 m. This difference could be attributed to the strong
 345 sound speed gradient close to the ground in the unstable case, as shown in
 Figure 7 for $\tau = 180^\circ$. The shadow zone starts at a shorter range in the unstable
 case, which explains the faster SPL decay at 1000 m. At 500 m, the ground
 effect is modified by the sound speed gradient, as already seen in Figure 10(a);
 this causes the interference dip to be shifted towards higher frequencies in the
 350 unstable atmosphere.

4.3. Point source approximation

The calculations using the point source approximation are now compared to the Amiet-PE solution. Only the neutral atmosphere is considered. First, the third-octave band spectra are compared at a distance of 500 m and 1000 m for different propagation directions in Figure 13. At 500 m, the spectra calculated with the point source approximation present many interference dips, while the Amiet-PE spectra are smoothed out because of the source height variation during one rotation. This is in agreement with the results of Heutschi *et al.* [3]. At 1000 m, the strongest difference is seen in the upwind direction, where the level are strongly underpredicted using the point source approximation. In the Amiet-PE model, the shadow zone indeed starts at a higher range because of the various source heights considered in the calculation. The noise maps of Figure 9(c-d) also show that the shadow zone is much larger when the point source approximation is used.

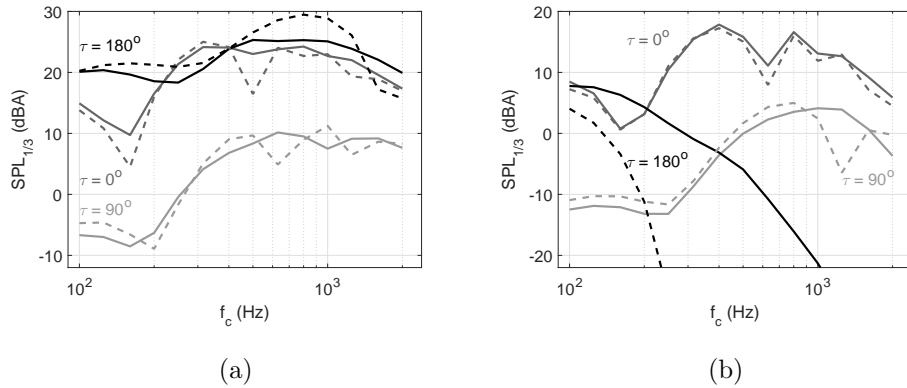


Figure 13: Third-octave band spectra of the sound pressure level in dB(A) for a neutral atmosphere at (a) $x_R = 500$ m and (b) $x_R = 1000$ m using the extended Amiet-PE model (solid lines) and the point source approximation (dashed lines). Color online.

The OASPL with the extended and point source models are compared in Figure 14(a) as a function of the distance x . Outside the acoustic shadow zone, the differences are relatively small. Due to the logarithmic summation, the strong interference dips appearing in the point source approximation result in a

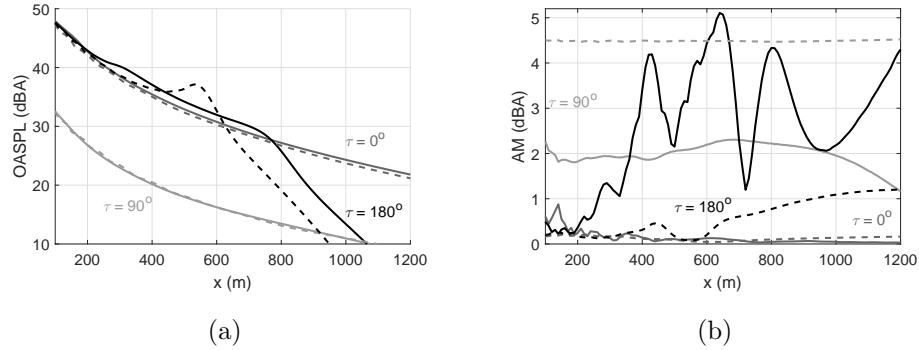


Figure 14: (a) OASPL and (b) AM in dB(A) as a function of x at $z_R = 2$ m for a neutral atmosphere using the extended Amiet-PE model (solid lines) and the point source approximation (dashed lines). Color online.

small underestimation of the OASPL (up to 1.5 dB(A) in the downwind direc-
 370 tion). In the upwind direction, on the other hand, the shadow zone starts 200 m
 earlier with the point source model, and thus the level difference is significant.

The AM is also plotted in Figure 14(b) using both the Amiet-PE model and
 the point source approximation. The results in the point source approximation
 are obtained from Equation (19), and vary little with distance x . They are quite
 375 different from the extended source model results. This behavior is due to the
 fact that the ΔL term that corresponds to propagation effects in Equation (19)
 is independent of the angle β .

4.4. Discussion on the effect of atmospheric turbulence on wind turbine noise propagation

380 It must be emphasized that the scattering effect of turbulence has not been
 included in the present model. This effect would tend to reduce the rate of
 decrease of the OASPL with distance in upward-refracting conditions [7, 37]. It
 is most significant at high frequencies, since the shadow zone starts at shorter
 range for higher frequencies, as seen in the spectra of Figures 10 and 13 for
 385 instance.

Neglecting atmospheric turbulence could also have an impact on amplitude
 modulation, although this effect has been much less studied in the literature.

This topic would certainly deserve more attention in future studies, although performing noise propagation simulations with turbulence is very computation-
390 ally demanding.

One classical method used to predict noise propagation in a refracting turbu-
lent atmosphere is to synthesize various realizations of the turbulent fields and to
study the statistics of the acoustic field through ensemble averaging [31, 7, 37].
This method is limited to rather simple configurations (typically a homogeneous
395 and isotropic turbulence over a flat ground) and requires at least 20 to 30 re-
alizations to yield an accurate mean SPL. For more complex configurations, an
alternative approach is to calculate the atmospheric flow with a time-domain
Large Eddy Simulation (LES) and to perform PE simulations using LES ve-
locity fields at different simulation times. This approach has been followed by
400 Barlas *et al.* [17, 18] in order to study the effect of wind turbine wake velocity
deficit and turbulence on sound propagation. The main difficulty is that LES
calculates relatively large turbulence structures (e.g. spatial resolution of 2.5 m
in Ref. [17]), thus omitting the scattering effect due to small-scale turbulence.

5. Conclusions

405 In this study, a method for coupling an aeroacoustic source model based on
Amiet's theory and a parabolic equation code is proposed to model wind turbine
noise propagation in an inhomogeneous atmosphere. The coupling method is
based on the backpropagation method, that yields accurate initial conditions to
the parabolic equation code while preserving the directivity of the aeroacoustic
410 sources.

First, the proposed Amiet-PE model is validated by comparison with an an-
alytical solution over a finite impedance ground in a homogeneous atmosphere,
and a Split-Step Padé (2,2) parabolic equation is shown to allow greater mesh
sizes to be used and thus to reduce computation time. The third-octave band
415 spectra, overall sound pressure levels and amplitude modulation are correctly
predicted by the model.

Then, wind turbine noise propagation is studied for different atmospheric conditions, considering both trailing edge noise and turbulent inflow noise sources. The Monin-Obukhov similarity theory is used to obtain the temperature and wind profiles, as well as the turbulence parameters needed as input to the turbulent inflow noise model. The main phenomenons observed are the modification of the ground effect due to atmospheric refraction, and the presence of a shadow zone when the receiver is against the wind at distances greater than about 800 m. To understand the shape of the calculated third-octave band SPL spectra, it is necessary to account for the strength and directivity of the two aeroacoustic source mechanisms, and for the propagation effects related to ground reflection and atmospheric refraction.

Finally, the validity of the point source approximation has been assessed. The spectra obtained in this approximation tend to show interference dips that are averaged out in the coupled Amiet-PE model. The difference in the overall sound pressure levels predicted by the two models remains quite small, except for upwind receivers because the position of the shadow zone is not well predicted by the point source calculation. On the other hand, it is not possible to correctly predict the amplitude modulation using the point source approximation.

In the future, the Amiet-PE model could be used to understand the influence of more extreme atmospheric conditions, such as low level jets that are characterized by a wind speed profile with a maximum at a few hundred meters above the ground [39, 40]. Since the effect of atmospheric turbulence on noise propagation is neglected in the simulations presented in this article, it would be valuable to include this effect in the model, following for instance the turbulence synthesis method described in Ref. [37], in order to evaluate its effect on OASPL and AM. To be able to use the Amiet-PE model in impact studies, for instance to assess the efficiency of noise mitigation measures, it would be desirable to reduce its computation time. This could be done by considering the blade segments as moving monopole sources, performing parabolic equation calculations only for a couple of source heights. This type of approach has been proposed recently by Barlas *et al.* [17] to study wind turbine wake effects on

atmospheric sound propagation.

Acknowledgments

450 The author would like to thank Didier Dagna from École Centrale de Lyon for his advice on the backpropagation method and on the ground impedance model used in this article, and Benoit Gauvreau from IFSTTAR Nantes and Romain Monchaux from IMSIA for their useful comments on the manuscript.

References

- 455 [1] S. Oerlemans, J. G. Schepers, Prediction of wind turbine noise and validation against experiment, *International Journal of Aeroacoustics* 8 (2009) 555–584.
- [2] S. Oerlemans, M. Smith, P. White, S. von Hünerbein, A. King, B. Piper, M. Cand, A. Bullmore, B. Wilson, H. Madsen, A. Fischer, K. Kragh, Wind turbine amplitude modulation: Research to improve understanding as to its cause and effect, Technical Report, RenewableUK (2013) Available online: <http://www.renewableuk.com/en/publications/reports.cfm/wind-turbine-amplitude-modulation>.
460
- [3] K. Heutschi, R. Pieren, M. Müller, M. Manyoky, U. W. Hayek, K. Eggen-schwiler, Auralization of wind turbine noise: Propagation filtering and vegetation noise synthesis, *Acta Acustica united with Acustica* 100 (2014) 13–24.
465
- [4] Y. Tian, B. Cotté, Wind turbine noise modeling based on Amiet’s theory: Effects of wind shear and atmospheric turbulence, *Acta Acustica united with Acustica* 102 (2016) 626–639. doi:10.3813/AAA.918979.
470
- [5] F. Bertagnolio, H. Madsen, A. Fischer, A combined aeroelastic-aeroacoustic model for wind turbine noise: verification and analysis of field measurements, *Wind Energy* 20 (8) (2017) 1331–1348. doi:10.1002/we.2096.

- 475 [6] H. Hubbard, K. Shepherd, Aeroacoustics of large wind turbines, *Journal of the Acoustical Society of America* 89 (6) (1991) 2495–2508.
- [7] E. M. Salomons, *Computational Atmospheric Acoustics*, Kluwer Academic Publishers, 2001.
- [8] J. Prospathopoulos, S. Voutsinas, Application of a ray theory model to the prediction of noise emissions from isolated wind turbines and wind parks, 480 *Wind Energy* 10 (2007) 103–119.
- [9] K. Bolin, M. Almgren, E. Ohlsson, I. Karasalo, Long term estimations of low frequency noise levels over water from an off-shore wind farm, *Journal of the Acoustical Society of America* 135 (3) (2014) 1106–1114.
- [10] S. Lee, D. Lee, S. Honhoff, Prediction of far-field wind turbine noise propa- 485 gation with parabolic equation, *Journal of the Acoustical Society of America* 140 (2) (2016) 767–778.
- [11] R. Makarewicz, Is a wind turbine a point source?, *Journal of the Acoustical Society of America* 129 (2) (2011) 579–581.
- [12] G. van den Berg, Wind turbine power and sound in relation to atmospheric 490 stability, *Wind Energy* 11 (2008) 151–169.
- [13] F. Bertagnolio, H. Madsen, C. Bak, N. Troldborg, A. Fischer, Aerodynamic noise characterization of a full-scale wind turbine through high-frequency surface pressure measurements, *International Journal of Aeroacoustics* 14 (2015) 729–776.
- 495 [14] D. Ecotièrre, Can we really predict wind turbine noise with only one point source?, in: *Sixth International Meeting on Wind Turbine Noise*, Glasgow, United Kingdom, 2015.
- [15] S. McBride, R. Burdisso, A comprehensive hamiltonian ray tracing technique for wind turbine noise propagation under arbitrary weather conditions, in: *Seventh International Meeting on Wind Turbine Noise*, Rotterdam, Netherlands, 2017. 500

- [16] F. Bertagnolio, H. Madsen, A. Fischer, Coupled wind turbine noise generation and propagation model: A numerical study, in: Seventh International Meeting on Wind Turbine Noise, Rotterdam, Netherlands, 2017.
- 505 [17] E. Barlas, W. Zhu, W. Shen, M. Kelly, S. Andersen, Effects of wind turbine wake on atmospheric sound propagation, *Applied Acoustics* 112 (2017) 51–61.
- [18] E. Barlas, W. Zhu, W. Shen, K. Dag, P. Moriarty, Consistent modelling of wind turbine noise propagation from source to receiver, *Journal of the Acoustical Society of America* 142 (5) (2017) 3297–3310.
- 510 [19] A. Lau, J. Kim, J. Hurault, T. Vronsky, A study on the prediction of aerofoil trailing-edge noise for wind-turbine applications, *Wind Energy* 20 (2016) 233–252.
- [20] R. Amiet, Acoustic radiation from an airfoil in a turbulent stream, *Journal of Sound and Vibration* 41 (1975) 407–402.
- 515 [21] R. Amiet, Noise due to turbulent flow past a trailing edge, *Journal of Sound and Vibration* 47 (1976) 387–393.
- [22] M. Roger, S. Moreau, Extensions and limitations of analytical airfoil broadband noise models, *International Journal of Acoustics* 9 (3) (2010) 273–305.
- 520 [23] Y. Rozenberg, G. Robert, S. Moreau, Wall-pressure spectral model including the adverse pressure gradient effects, *AIAA Journal* (2012) 2168–2179.
- [24] S. Sinayoko, M. Kingan, A. Agarwal, Trailing edge noise theory for rotating blades in uniform flow, *Proc. R. Soc. A* 469 (2013) 20130065.
- [25] K. Attenborough, K. Li, K. Horoshenkov, *Predicting Outdoor Sound*, Taylor & Francis, 2007.
- 525 [26] D. Dagna, K. Attenborough, P. Blanc-Benon, On the inadvisability of using single parameter impedance models for representing the acoustical

- properties of ground surfaces, *Journal of the Acoustical Society of America* 138 (4) (2015) 2399–2413.
- 530 [27] M. West, K. Gilbert, R. Sack, A tutorial on the parabolic equation (PE) model used for long range sound propagation in the atmosphere, *Applied Acoustics* 37 (1992) 31–49.
- [28] K. Gilbert, X. Di, A fast Green’s function method for one-way sound propagation in the atmosphere, *Journal of the Acoustical Society of America* 94 (1993) 2343–2352.
- 535 [29] M. Collins, A split-step Padé solution for the parabolic equation method, *Journal of the Acoustical Society of America* 93 (4) (1993) 1736–1742.
- [30] V. Ostashev, D. Juvé, P. Blanc-Benon, Derivation of a wide-angle parabolic equation for sound waves in inhomogeneous moving media, *Acta Acustica united with Acustica* 83 (1997) 455–460.
- 540 [31] L. Dallois, P. Blanc-Benon, D. Juvé, A wide-angle parabolic equation for acoustic waves in inhomogeneous moving media: Applications to atmospheric sound propagation, *Journal of Computational Acoustics* 9 (2) (2001) 477–494.
- 545 [32] M. Galindo, Approximations in the PE method. Phase and level errors in a downward refracting atmosphere, in: *Seventh International Symposium on Long-Range Sound Propagation*, Lyon, France, 1996.
- [33] L. Dallois, P. Blanc-Benon, D. Juvé, The modelling of long range sound propagation: recent developments in the PE method, in: *Tenth International Symposium on Long-Range Sound Propagation*, 2002.
- 550 [34] M. Collins, E. Westwood, A higher-order energy-conserving parabolic equation for range-dependent ocean depth, sound speed, and density, *Journal of the Acoustical Society of America* 89 (3) (1991) 1068–1075.

- [35] D. Dragna, Modélisation par une approche temporelle de la propagation
555 acoustique en milieu extérieur: traitement de frontières complexes et vali-
dation sur site ferroviaire [Time-domain modeling of outdoor sound prop-
agation: treatment of complex boundary conditions and validation on a
railway site], Ph.D. thesis, École Centrale de Lyon, no. 2011-35 (2011).
- [36] G. Guillaume, O. Faure, B. Gauvreau, F. Junker, M. Bérengier,
560 P. L’Hermite, Estimation of impedance model input parameters from *in situ*
measurements: Principles and applications, Applied Acoustics 95 (2015)
27–36.
- [37] B. Cotté, P. Blanc-Benon, Estimates of the relevant turbulent scales for
acoustic propagation in an upward refracting atmosphere, Acta Acustica
565 united with Acustica 93 (6) (2007) 944–958.
- [38] S. Oerlemans, P. Sijtsma, B. M. López, Location and quantification of noise
sources on a wind turbine, Journal of Sound and Vibration (2007) 869–883.
- [39] P. Baas, F. C. Bosveld, H. K. Baltink, A. A. Holtslag, A climatology of
nocturnal low-level jets at Cabauw, Journal of Applied Meteorology and
570 Climatology 48 (2009) 1627–1642.
- [40] A. Lampert, B. B. Jimenez, G. Gross, D. Wulff, T. Kenull, One-year ob-
servations of the wind distribution and low-level jet occurrence at Braun-
schweig, North German Plain, Wind Energy 19 (2016) 1807–1817. doi:
10.1002/we.1951.